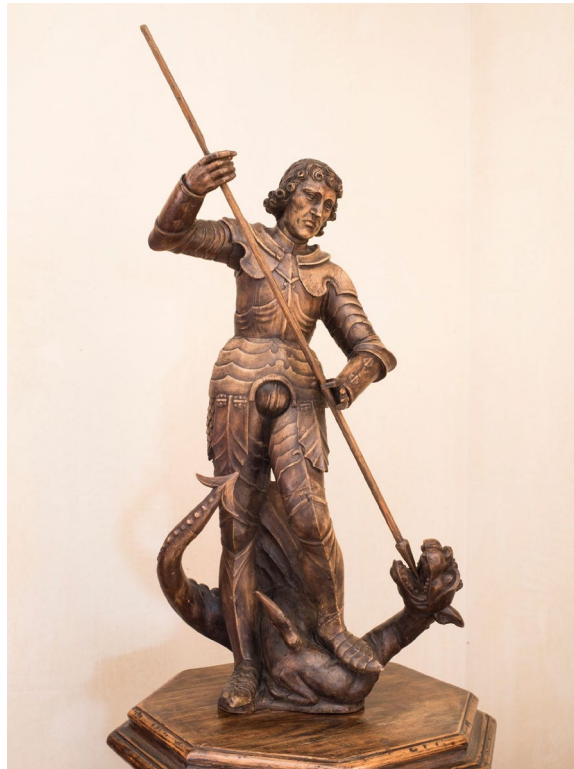




ABADIA RETUERTA



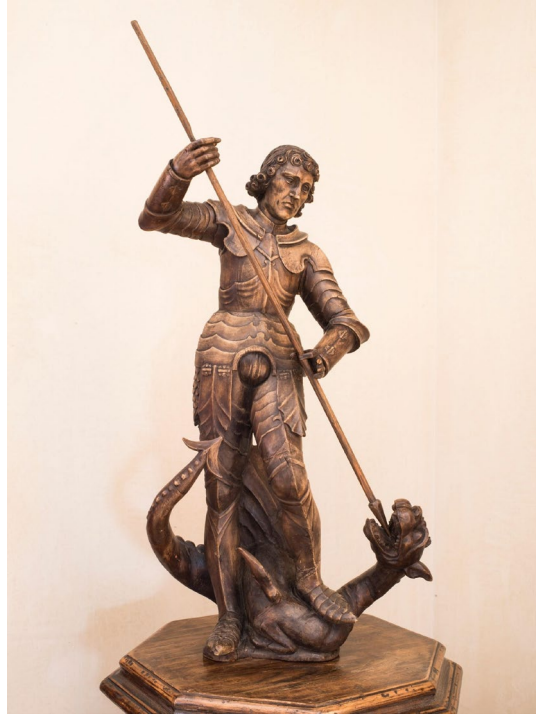
Saint George
wooden sculpture, polychromy 93 x 16
cm
19th century

St. George is usually depicted in isolation, wearing a knightly armour and facing the dragon.

St George represents the struggle between good and evil. This 3rd century saint, a Christian from Cappadocia, slew the dragon that was threatening the city. The legend of St. George is of pagan origin and may be related to the liberation of Andromeda by the hero Perseus.



ABADIA RETUERTA



San Jorge
madera policromada 93 x 16
cm
s. XIX

San Jorge suele representarse aislado, con armadura de caballero y enfrentándose al dragón.

San Jorge representa la lucha entre el bien y el mal. Este santo del siglo III, cristiano de Capadocia, mató al dragón que amenazaba la ciudad. La leyenda de San Jorge es de origen pagano, pudiendo emparentarse con la liberación de Andrómeda por el héroe Perseo.